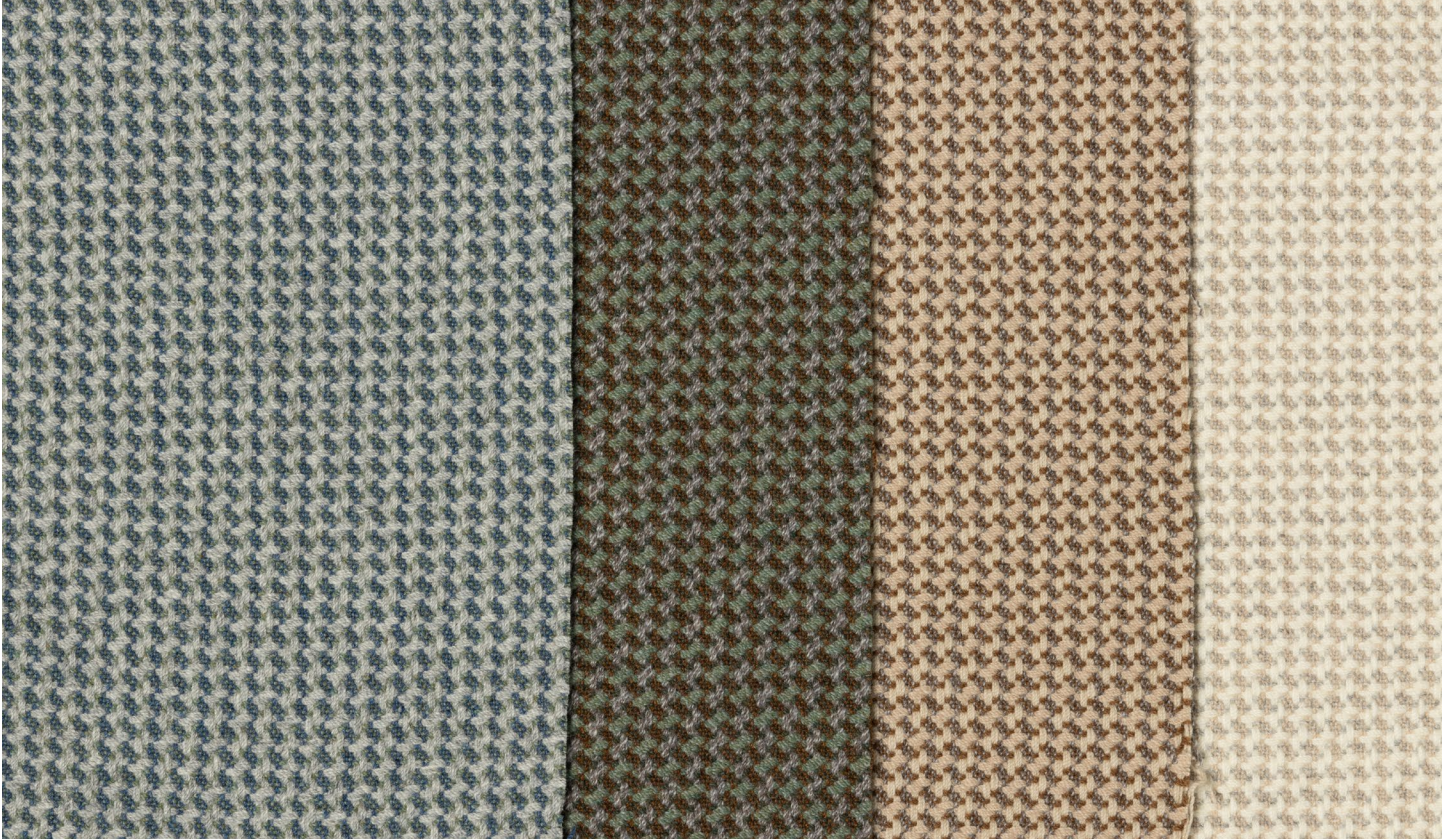


WOOL JUMPER (DE14327-DE14330)



THE SPORTING COLLECTION / WEAVE

This soft lambswool hopsack fabric draws inspiration from woolly sweaters worn as a part of school uniforms, adorned for participation in sporting matches, and those which warm you on a crisp fall day whilst watching your favorite sporting events.

- Description: Lambswool Basket
- Available in 4 colors
- Custom colors available & lead time: 130 yds (120 mt), 8 weeks for trial, 12-14 weeks production upon receipt of order. Subject to design fee.
- Composition: 100% Wool
- Width: 57" (147 cm)
- Weight: 21 oz/lyd (670 g/lm)
- Repeat: 0.39" H x 0.39" V (0.99 cm H x 0.99 cm V)
- Martindale Abrasion: 35,000 Rubs
- BS 5852 British Cigarette & Match: Pass
- Cal 117-2013: Pass
- Country of Origin: UK
- European Tariff Code: 5112.1919
- USA Tariff Code: 511219000
- World Tariff Code: 511219000

CLEANING & CARE INSTRUCTIONS

Professional dry clean, delicate treatment. Do not wash. Do not bleach. Do not tumble dry. Steam with a protective cloth over the steamer head. Iron at low temperature with a protective cloth between the iron and the fabric. To quickly clean up spills, blot with a clean cloth, do not rub. Allow solid spills to dry before carefully removing from the surface of the fabric. To remove dust or light dirt, gently brush or vacuum with an upholstery attachment.

KNIT BACKING

Knit backing may be helpful for upholstery and pillows. The designer should consult their workroom. Reinforce upholstery seams. An ample seam allowance and overlock stitching/serging are advised

DRAPERY

For best results, hang drapery before hemming to allow the fabric to adjust to the climate of the room. All drapery should be lined to block light and protect the face fabric.

END USE

Upholstery, drapery, wall upholstery, soft goods, and accessories.

WATERFALL

DEWF118

HOLLAND & SHERRY

INTERIORS.HOLLANDANDSHERRY.COM
CONTACT YOUR SALES REP FOR MORE INFO