



*Est. 1836*

# HOLLAND & SHERRY

INTERIORS



C1-001  
*White Sand*



C1-002  
*Lupine*



C3-001  
*White Honey*

## RUGS || PAXTON : LOUISA

*Dimensions:*  
Custom / Max Width 17'

*Quality:*  
Handwoven

*Content:*  
45% Wool / 45% Jute  
10% Cotton

*HS Code:*  
HSFLK

*Price Code:*  
C

*Origin:*  
India



*Est. 1836*

# HOLLAND & SHERRY

INTERIORS



CL-001  
*Moth*



CL-002  
*Moonrock*



CL-003  
*Mist*

## RUGS || PAXTON : SANTIS

*Dimensions:*  
Custom / Max Width 17'

*Quality:*  
Handwoven

*Content:*  
90% Wool / 10% Cotton

*HS Code:*  
HSFLK

*Price Code:*  
C

*Origin:*  
India



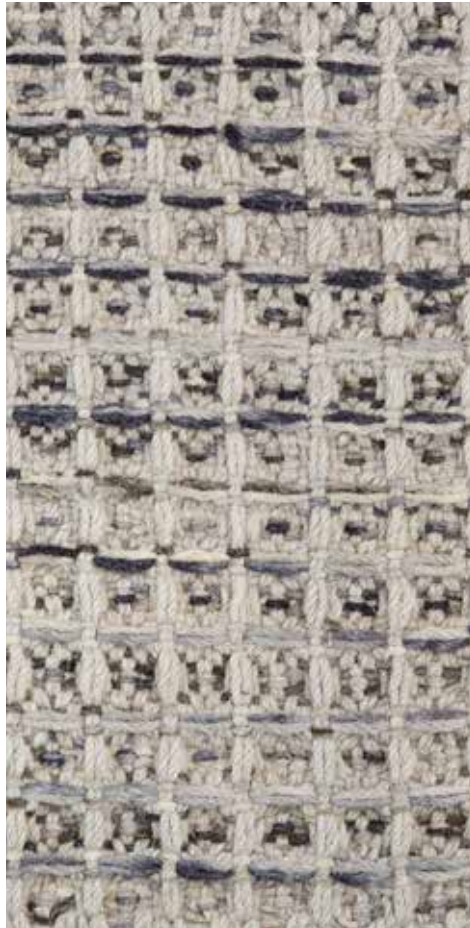
Est. 1836

# HOLLAND & SHERRY

INTERIORS



HD-002  
*Straw*



HD-004  
*Granite*



HD-005  
*Icicle*

## RUGS || PAXTON : OTTO

*Dimensions:*  
Custom / Max Width 17'

*Quality:*  
Handwoven

*Content:*  
90% Wool / 10% Cotton

*HS Code:*  
HSFLK

*Price Code:*  
E

*Origin:*  
India



Est. 1836

# HOLLAND & SHERRY

INTERIORS



S12-P-10-008  
*Storm*



S12-P-10-009  
*Falcon*



S12-P-10-010  
*Fog*

## RUGS || PAXTON : KLEMENS

*Dimensions:*  
Custom / Max Width 17'

*Quality:*  
Handwoven

*Content:*  
100% NZ Wool + Plant  
Fibre Plaits

*HS Code:*  
HSFLK

*Price Code:*  
H

*Origin:*  
India



Est. 1836

# HOLLAND & SHERRY

INTERIORS



THB-003  
*Biscuit*



THB-004  
*Caribou*



THB-005  
*Canyon*

## RUGS || PAXTON : ASA

*Dimensions:*  
Custom / Max Width 17'

*Quality:*  
Handwoven

*Content:*  
100% NZ Wool + Plant  
Fibre Plaits

*HS Code:*  
HSFLK

*Price Code:*  
H

*Origin:*  
India



Est. 1836

# HOLLAND & SHERRY

INTERIORS



TNB-001  
*Acorn*



TNB-002  
*Pearl*



TNB-010  
*Antelope*

## RUGS || PAXTON : FABIENNE

*Dimensions:*  
Custom / Max Width 17'

*Quality:*  
Handwoven

*Content:*  
100% NZ Wool + Plant  
Fibre Plaits

*HS Code:*  
HSFLK

*Price Code:*  
H

*Origin:*  
India