

Est. 1836

HOLLAND & SHERRY

SAVILE ROW · LONDON

NEW FOR SS21

NEWSLETTER

26th March 2021 | Issue 49



AIRESKO

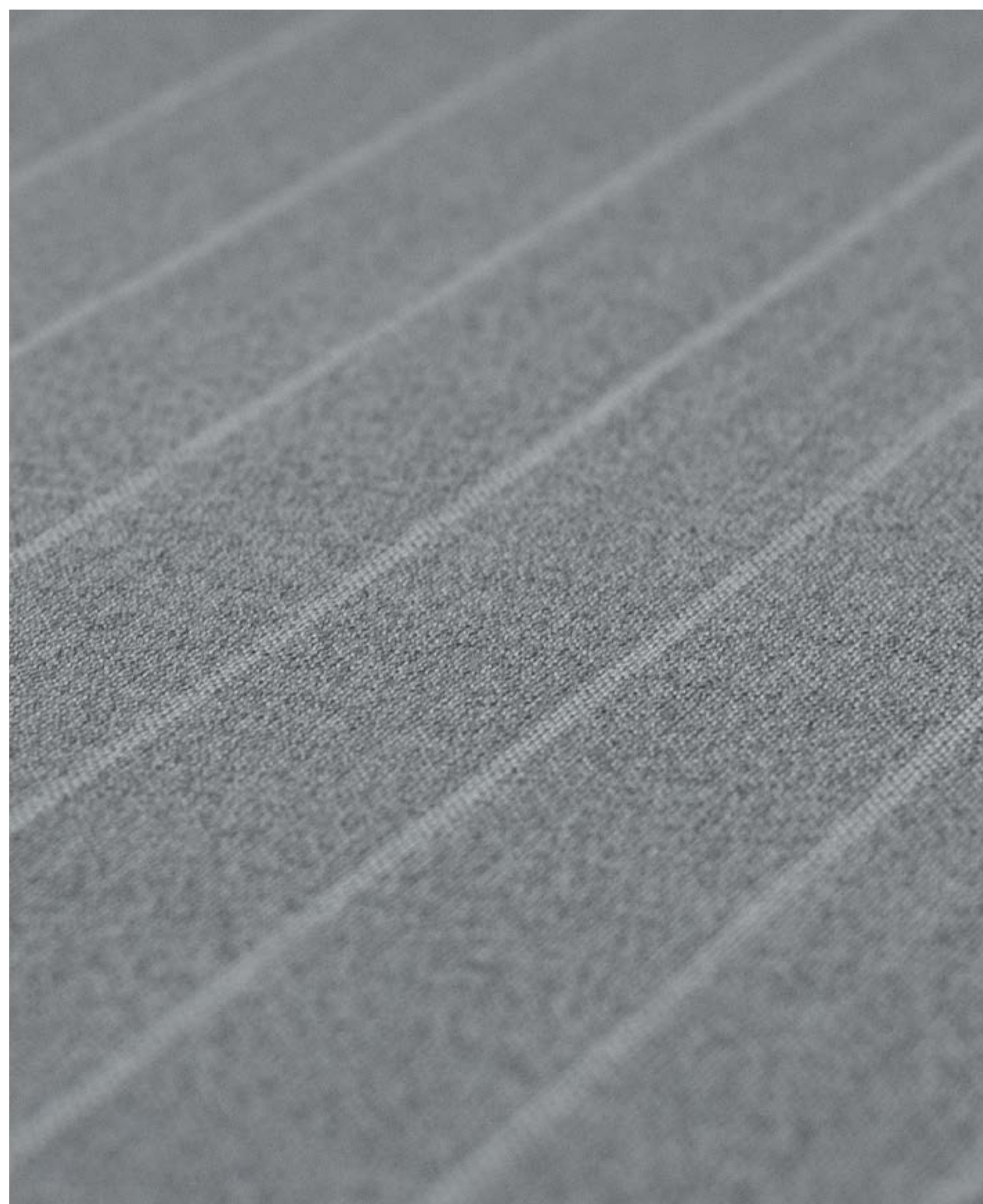
3 & 4 Ply Wool Worsted Suitings



*The perfect choice for
travel and summer business attire*

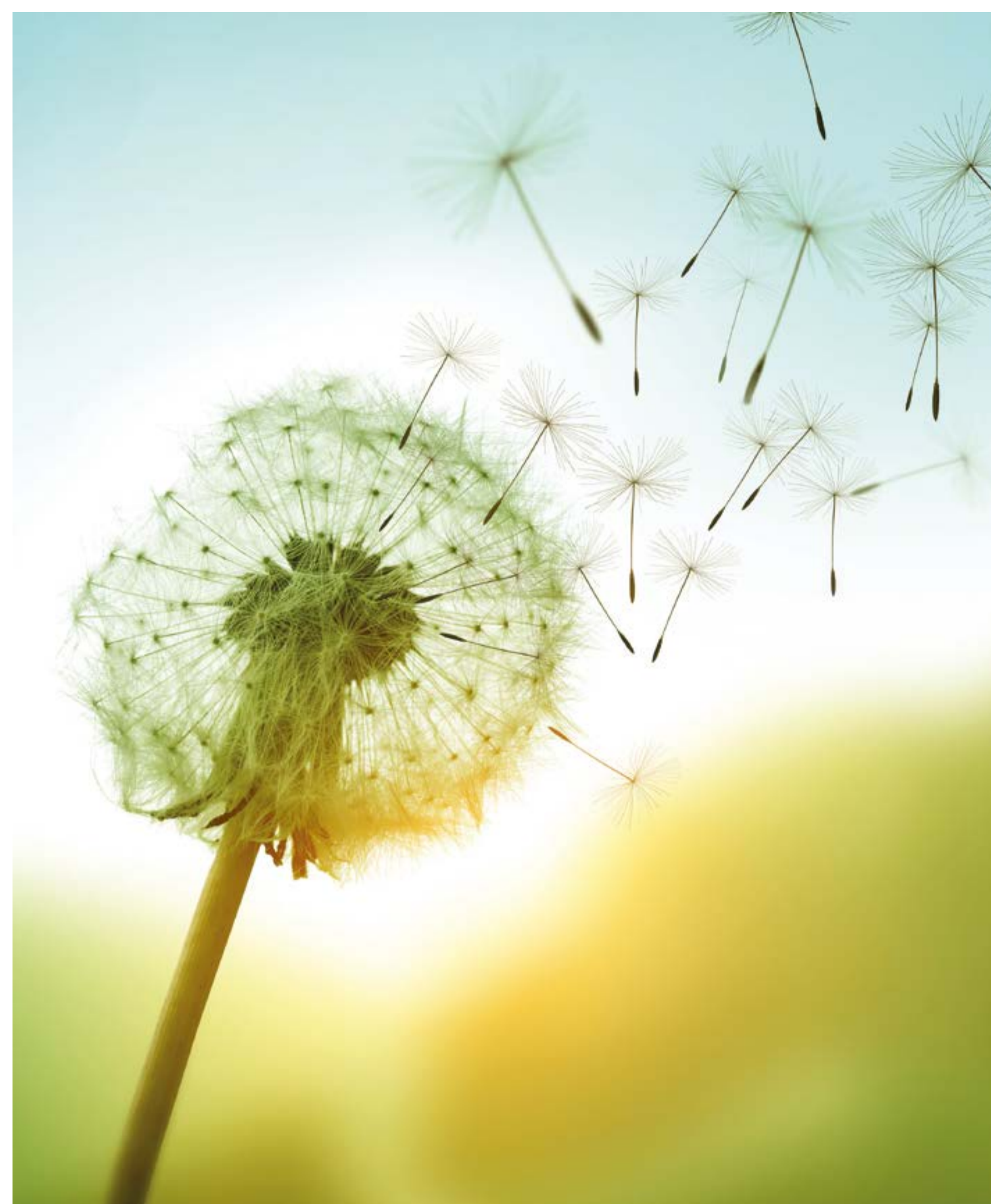
Fabric # 3221601, 3221611 & 3221615

Airesco is a new collection of 3 and 4 ply fabrics woven from a plain weave construction and available in a variety of weights. The relationship between yarn and construction produces a unique fabric very different in character to most other fabrics in the Holland & Sherry collection, whilst the soft contrasting colours produce a palette of classic blues, traditional greys and contemporary reds, greens and aubergine.



Fabric # 3221608

The construction and coarse characteristics of the 3 and 4 ply yarns provide the fabric with an open but extremely durable structure. This structure allows light to permeate through the small passage between each thread, and air to flow freely through air pockets created by the intertwining, closely woven, wool fibres. These qualities enrich the performance and appearance of the fabric, keeping the body cool and comfortable in the warmest of climates.



Fabric # 3221616, 3221614 & 3221600

These fabrics are attributed with many sought after qualities associated with traditional tailoring of bygone years. They are inherently strong and durable, and have a substantially enhanced handle; one that is firm, crisp and fuller bodied to touch.

The finished fabrics have superior strength qualities that contribute to the wear and drape requirements of the final garment making them the perfect choice for travel and summer business attire.



Bunch:

HS 2132 Airesco

Composition:

100% 3 Ply Wool Worsted

100% 4 Ply Wool Worsted

100% 4 Ply Wool Worsted Comfort Stretch

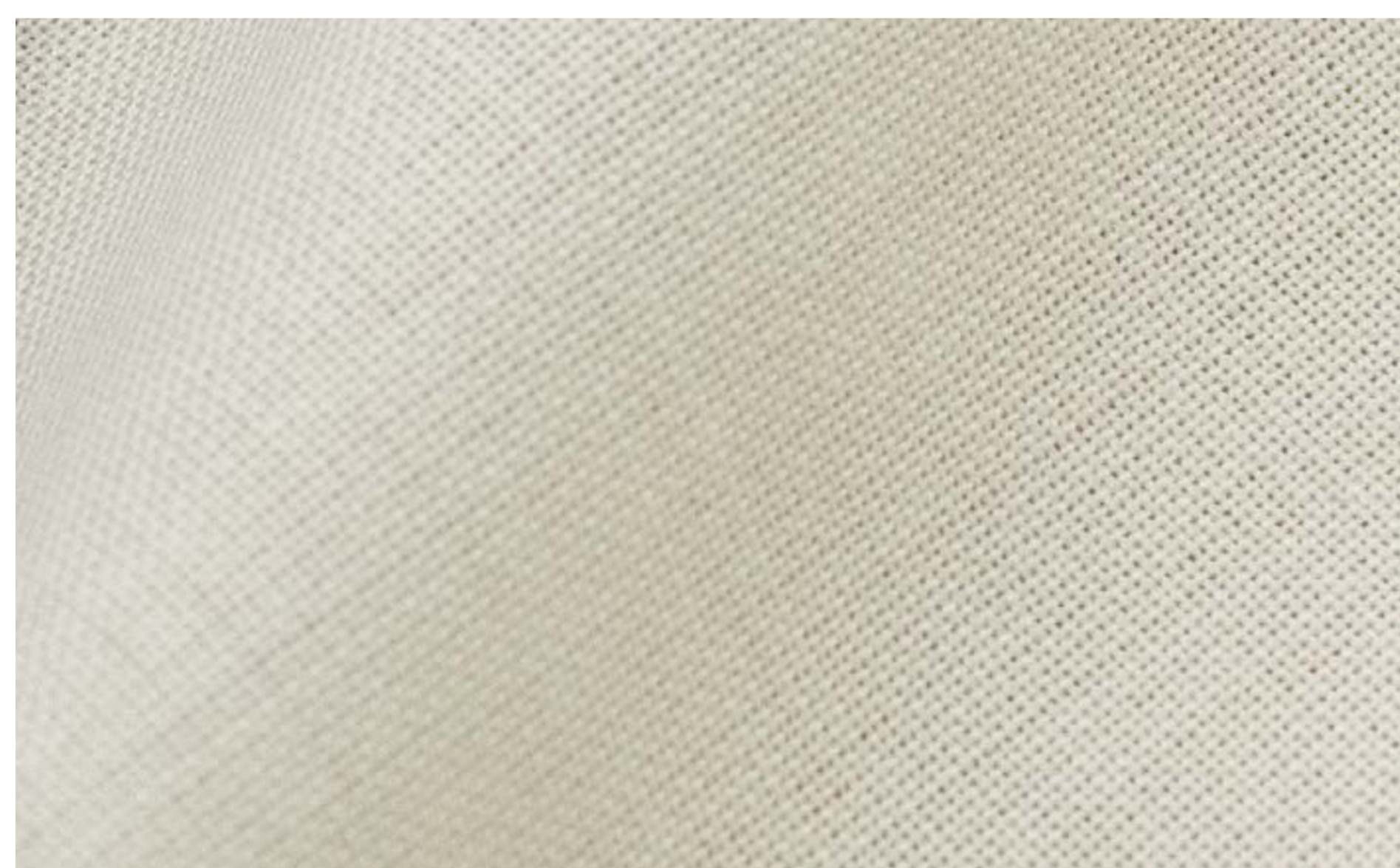
Weight:

280-440gm 8½-14oz

› [Go to website](#)



Fabric # 3221002



Fabric # 3221600

For more information
apparel.hollandandsherry.com

  @hollandandsherryapparel