

*Est. 1836*

HOLLAND & SHERRY

SAVILE ROW · LONDON

**SHERRYKASH**

LUXURY WOOL WITH CASHMERE JACKETING  
HS 2090B | JACKETING





A regular feature of the Holland & Sherry collection, these luxury jacketing fabrics are constructed from the finest woollen-spun blended yarns, combining comfort and softness beyond compare.

Fabric # 9020001



*SherryKash is the peak of perfection  
and is renowned for its luxurious  
touch and soft contemporary styling.*



## *The finest cashmere fibres*

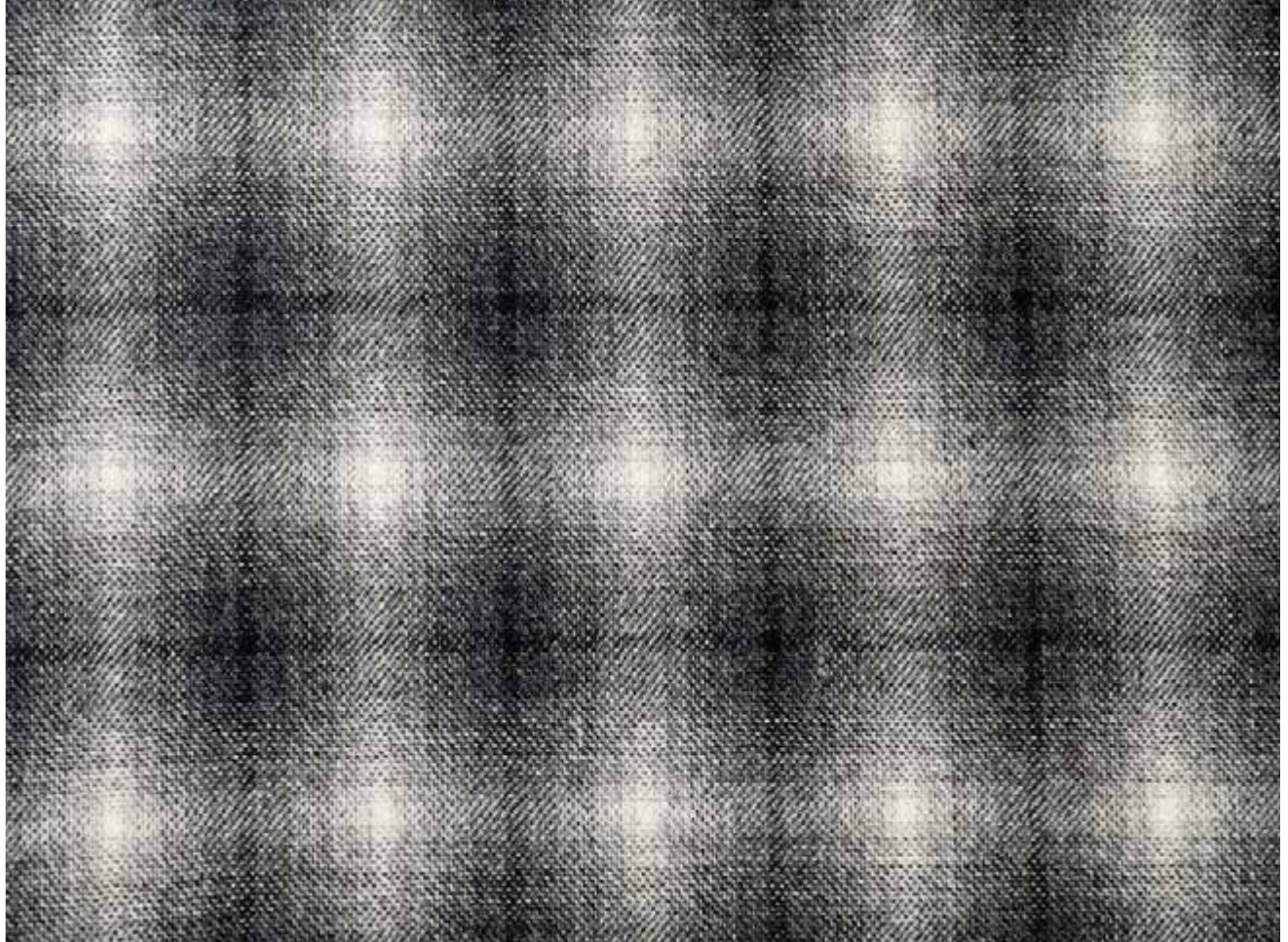
have been gathered from the saddle of the Cashmere goat by careful combing. This takes place during the spring months, when the soft downy, wintry undercoat is thick and lofty and ready to shed in preparation for the warm

summer months ahead. Care is taken not to remove the outer guard hairs, these are much coarser than the soft down and would spoil the handle and luxury of the finished product.

The cashmere is then carefully blended with 18µ merino wool to produce a range of opulent melange colours that are beyond compare.



Fabric # 9020113



The gentle combing and blending of the fibres continues, and in doing so, any short staple fibres are removed from the blend.

*Once all the longer fibres are in perfect alignment and the desired level of colour achieved, the fibres are gently twisted together in a soft 'S' direction.*

*The soft 'S' twist in the finished yarn and the gentle scour that the cloth undergoes contribute to the unparalleled softness, lightness and warmth of the cloth.*



Fabric # 9020107, 9020108, 9020103



*Est. 1836*

# HOLLAND & SHERRY

SAVILE ROW · LONDON

## WORLDWIDE OFFICES

### UK

Holland & Sherry Ltd  
9/10 Savile Row  
London, W1S 3PF  
Tel: +44 (0)207 437 0404  
Fax: +44 (0)207 734 6110  
orders@hollandandsherry.co.uk

### Australia

Holland & Sherry Pty Ltd  
Office 5/Suite 2, 54 Davis Avenue  
South Yarra, Melbourne, Victoria 3141  
Tel: +61 429 369 986  
Interstate customers: 1800 221 031  
enquiries@hollandandsherry.com.au

### China

Holland & Sherry China  
Room 405, No. 71 Xi Suzhou Road  
Jing'An District, Shanghai 200041  
Tel: +86 186 2112 4995  
sales.china@hollandandsherry.co.uk

### France

Holland & Sherry Paris  
17 rue de l'Echaudé  
75006 Paris  
Tel: +33 1 42 33 36 14  
Fax: +33 1 40 26 51 85  
info.couture@hollandsherry.fr

### Germany

Holland & Sherry GmbH  
Ottostrasse 5, 80333 München  
Tel: +49 (0)1579 2359338  
Fax: +49 (0)89 215 470 479  
info@hollandandsherry.de

### India

Holland & Sherry India Pvt Ltd  
212, 213 Somdutt Chambers 2  
Bhikaji Cama Place, New Delhi 110066  
Tel: +91 11 40519577  
+91 11 49149691  
sales@hollandandsherry.in

### Italy

Holland & Sherry Srl  
Via Cosimo del Fante 10  
20122 Milano  
Tel: +39 02 58 32 48 41  
Fax: +39 02 58 32 48 58  
info@hollandandsherry.it

### Mexico

Holland & Sherry Mexico  
S.A. de C.V., Monte Libano 280  
Lomas de Chapultepec  
Miguel Hidalgo, C.P. 11000  
Mexico City  
Tel: +52 55 6389 6888  
infomexico@hollandandsherry.co.uk

### Spain

Holland & Sherry Spain  
Tel: +34 645 040 601  
+34 910 164 479  
+34 620 314 602  
Fax: +34 910 164 479  
infospain@hollandandsherry.co.uk

### Dubai UAE

Holland & Sherry Middle East (LLC)  
Sama Tower, Suite 204 - Level 2  
Sheikh Zayed Road, Dubai, P.O. Box 62489  
Tel: +971 4 358 5151  
Fax: +971 4 358 5252  
enquiries@hollandandsherry.ae

### USA & Canada

Holland & Sherry Inc  
330 East 59th Street, 6th Floor  
New York, NY 10022  
Tel: +1 212 758 1911  
Fax: +1 212 758 1967  
Toll Free: 800 223 6385  
orders@hollandandsherry.com

### Administration & Export Sales

Holland & Sherry Ltd  
Venlaw Road, Peebles  
EH45 8DD, Scotland  
Tel: +44 (0)1721 720101  
Fax: +44 (0)1721 722309  
enquiries@hollandandsherry.co.uk

[apparel.hollandandsherry.com](http://apparel.hollandandsherry.com)

  @hollandandsherryapparel



