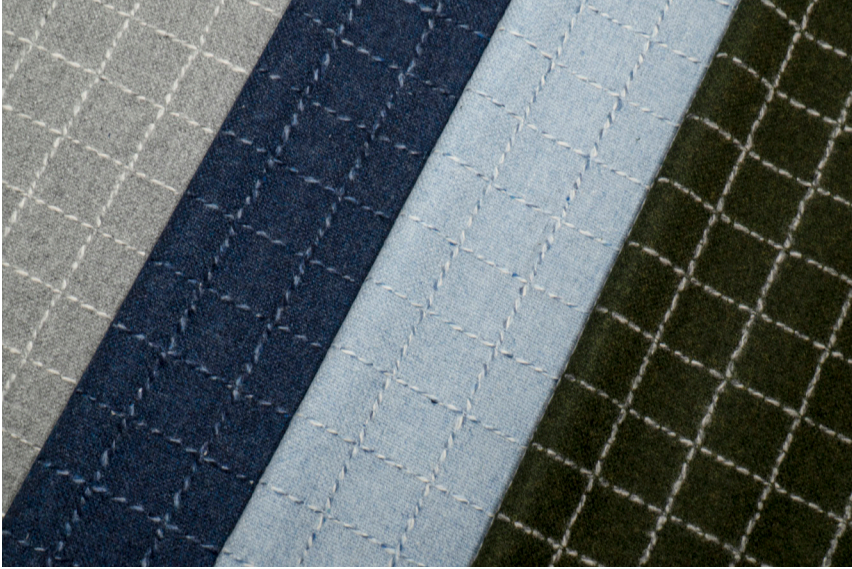


# MORAY CASHMERE FINDHORN



Designed and woven in partnership with Johnstons of Elgin, esteemed Scottish cashmere weaver, Holland & Sherry is proud to introduce **Moray Cashmere**, a collection inspired by the of North of Scotland. Tweed textures, a mid-scale check, windowpane and jacquard bring an elevated sense of design to this cashmere collection. Each pattern is named after a local river that flows to the sea on the northern coastline, the life blood to local fishing, famed distilleries and the weaving mill itself. **The collection includes 6 designs and a total of 30 colorways: Spey Hopsack, Ness, Lossie, Findhorn, Deveron Check and Nairn Tweed.**

## FINDHORN

Three colors of cashmere intertwine to create the windowpane in this petite design.

- Description: Moray Cashmere - Windowpane
- Available in 5 colors
- Custom colors available & lead time: consult fabric design
- Composition: 100% Cashmere
- Width: 54" (139 cm)
- Weight: 15 oz/lyd (439 g/ml)
- Pattern Repeat: 1.4" x 1.6" (3.5 cm x 4 cm)
- Martindale Abrasion: 20,000
- California Technical Bulletin 117 – 2013: Pass
- BS 5852 British Cigarette: Meets the requirements
- Fabric Shrinkage: +/- 0-4%
- Country of Origin: UK
- European Tariff Code: 51 11 19 00 00
- USA Tariff Code: 5111.19.10.00
- World Tariff Code: 511111000
- Minimum order: 2 yds (2 m)

## KNIT BACKING

Knit backing is required for upholstery and recommended for pillows. Reinforce upholstery seams. An ample seam allowance and overlock stitching/serging is advised. The designer should consult their workroom.

## CLEANING & CARE INSTRUCTIONS

Professional dry clean only, delicate treatment. Do not wash. Do not bleach. Do not tumble dry. Cool iron on the reverse side, no steam.

## DRAPERY

For best results, hang drapery before hemming to allow the fabric to adjust to the climate of the room.

## END USE

Light upholstery, drapery, accessories, and soft goods.

## WATERFALL DEWF110

# HOLLAND & SHERRY

INTERIORS.HOLLANDANDSHERRY.COM  
CONTACT YOUR SALES REP FOR MORE INFO.